

Impact of religious selection on parental choice

20 June 2017



The Department for Education recently published the official local-authority-level data from the primary and secondary school application and offer process for places starting in September 2017.¹ The data details, among other things, the proportion of parents in each local authority area that received an offer for their first preference school.

Using the most recently available statistics on the proportion of secondary school places within each local authority that are subject to religious selection², the Fair Admissions Campaign compared the proportion of parents in each local authority who were offered their first choice secondary school to the proportion of secondary places in each local authority that are subject to religious selection (see table below). This analysis found that, on average, the proportion of parents offered their first choice secondary school was significantly lower in areas with a high proportion of religiously selected places.

More specifically, for every 1% increase in the proportion of secondary school places subject to religious selection, there is a 4.2% increase in parents missing out on their first choice school.

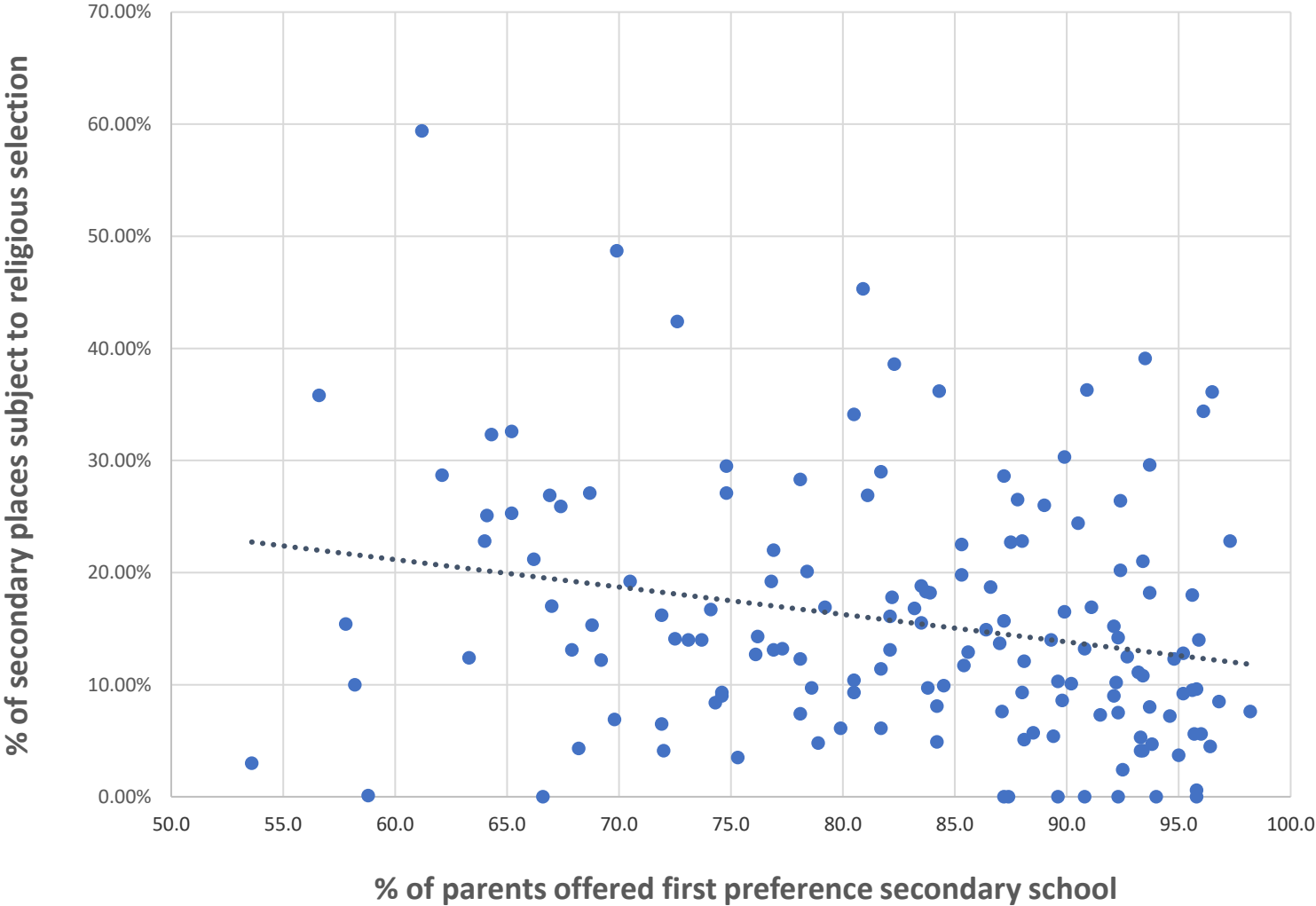
This correlation is illustrated by the graph below.

June 2017
Humanists UK

¹ *Secondary and primary school applications and offers: 2017*, Department for Education, 13 June 2017: <https://www.gov.uk/government/statistics/secondary-and-primary-school-applications-and-offers-2017>

² In 2013 the Fair Admissions Campaign surveyed all secondaries' admissions policies and identified the extent to which each was religiously selective. This is the only data of this nature we are aware of, and so we use that data here. The slight difference in the age of this data from the most recent school preference data should not make a meaningful difference to the analysis below.

Impact of religious selection on parental choice (by local authority)



Local authority	% of parents offered first preference secondary school	% of secondary places subject to religious selection
Barking and Dagenham	74.3	8.40%
Barnet	68.7	27.10%
Barnsley	95.2	9.20%
Bath and North East Somerset	89.8	8.60%
Bedford	96.8	8.50%
Bexley	73.1	14.00%
Birmingham	67.9	13.10%
Blackburn with Darwen	80.9	45.30%
Blackpool	83.2	16.80%
Bolton	82.3	38.60%
Bournemouth	85.3	19.80%
Bracknell Forest	86.4	14.90%
Bradford	73.7	14.00%
Brent	65.2	25.30%
Brighton and Hove	83.7	18.30%
Bristol City of	74.1	16.70%
Bromley	72.0	4.10%
Buckinghamshire	75.3	3.50%
Bury	81.7	29.00%
Calderdale	84.2	8.10%
Cambridgeshire	92.5	2.40%
Camden	70.5	19.20%
Central Bedfordshire	96.4	4.50%
Cheshire East	93.7	8.00%

Cheshire West and Chester	93.7	18.20%
Cornwall	58.8	0.10%
Coventry	97.3	22.80%
Croydon	81.1	26.90%
Cumbria	67.0	17.00%
Darlington	93.4	21.00%
Derby	83.8	9.70%
Derbyshire	79.9	6.10%
Devon	95.8	0.60%
Doncaster	95.6	9.50%
Dorset	92.1	9.00%
Dudley	93.3	4.10%
Durham	86.6	18.70%
Ealing	95.6	18.00%
East Riding of Yorkshire	66.6	0.00%
East Sussex	96.0	5.60%
Enfield	87.0	13.70%
Essex	69.8	6.90%
Gateshead	87.5	22.70%
Gloucestershire	88.1	5.10%
Greenwich	87.2	15.70%
Hackney	64.0	22.80%
Halton	64.3	32.30%
Hammersmith and Fulham	93.5	39.10%
Hampshire	53.6	3.00%
Haringey	93.4	10.80%
Harrow	69.2	12.20%

Hartlepool	72.6	42.40%
Havering	92.4	26.40%
Herefordshire	78.6	9.70%
Hertfordshire	95.9	14.00%
Hillingdon	78.4	20.10%
Hounslow	67.4	25.90%
Isle of Wight	63.3	12.40%
Isles Of Scilly	89.6	0.00%
Islington	66.9	26.90%
Kensington and Chelsea	61.2	59.40%
Kent	80.5	10.40%
Kingston upon Hull City of	82.1	13.10%
Kingston upon Thames	76.8	19.20%
Kirklees	87.1	7.60%
Knowsley	84.3	36.20%
Lambeth	62.1	28.70%
Lancashire	87.2	28.60%
Leeds	85.4	11.70%
Leicester	83.5	15.50%
Leicestershire	93.4	4.10%
Lewisham	57.8	15.40%
Lincolnshire	89.4	5.40%
Liverpool	69.9	48.70%
Luton	81.7	11.40%
Manchester	74.8	29.50%
Medway	78.9	4.80%
Merton	65.2	32.60%
Middlesbrough	83.9	18.20%

Milton Keynes	84.5	9.90%
Newcastle upon Tyne	88.0	22.80%
Newham	72.5	14.10%
Norfolk	95.0	3.70%
North East Lincolnshire	93.8	4.70%
North Lincolnshire	91.5	7.30%
North Somerset	92.3	0.00%
North Tyneside	90.8	13.20%
North Yorkshire	92.7	12.50%
Northamptonshire	81.7	6.10%
Northumberland	98.2	7.60%
Nottingham	79.2	16.90%
Nottinghamshire	93.2	11.10%
Oldham	74.8	27.10%
Oxfordshire	88.5	5.70%
Peterborough	85.6	12.90%
Plymouth	92.1	15.20%
Poole	89.6	10.30%
Portsmouth	95.8	9.60%
Reading	78.1	12.30%
Redbridge	66.2	21.20%
Redcar and Cleveland	94.8	12.30%
Richmond upon Thames	68.2	4.30%
Rochdale	93.7	29.60%
Rotherham	94.6	7.20%
Rutland	94.0	0.00%
Salford	80.5	34.10%
Sandwell	74.6	9.30%
Sefton	90.9	36.30%

Sheffield	88.0	9.30%
Shropshire	95.8	0.00%
Slough	68.8	15.30%
Solihull	77.3	13.20%
Somerset	92.3	7.50%
South Gloucestershire	87.4	0.00%
South Tyneside	87.8	26.50%
Southampton	89.9	16.50%
Southend-on-Sea	76.2	14.30%
Southwark	64.1	25.10%
St. Helens	96.5	36.10%
Staffordshire	90.2	10.10%
Stockport	82.1	16.10%
Stockton-on-Tees	89.0	26.00%
Stoke-on-Trent	89.9	30.30%
Suffolk	93.3	5.30%
Sunderland	90.5	24.40%
Surrey	83.5	18.80%
Sutton	76.1	12.70%
Swindon	92.2	10.20%
Tameside	82.2	17.80%
Telford and Wrekin	84.2	4.90%
Thurrock	71.9	6.50%
Torbay	88.1	12.10%
Tower Hamlets	71.9	16.20%
Trafford	76.9	22.00%
Wakefield	95.2	12.80%
Walsall	74.6	9.00%
Waltham Forest	78.1	7.40%

Wandsworth	58.2	10.00%
Warrington	89.3	14.00%
Warwickshire	80.5	9.30%
West Berkshire	90.8	0.00%
West Sussex	91.1	16.90%
Westminster	56.6	35.80%
Wigan	96.1	34.40%
Wiltshire	95.7	5.60%
Windsor and Maidenhead	76.9	13.10%
Wirral	85.3	22.50%
Wokingham	87.2	0.00%
Wolverhampton	78.1	28.30%
Worcestershire	92.3	14.20%
York	92.4	20.20%